

## ADDENDUM #1

Date: November 20, 2018

This Addendum applicable to work designated herein shall be understood to be and is an Addendum and as such shall be part of and included in the Contract.

To all bidders for furnishing all labor and materials necessary for:

**SHELLEY SENIOR CENTER  
SHELLEY, IDAHO  
REMODEL**

Failure to acknowledge receipt of this Addendum on the bid proposal form may result in rejection of your bid.

Addendum consists of: 2 pages. Attached Documents consist of: Sheet A1.0, Sheet A1.1, AD1.1, AD1.2, AD1.3, Pre-bid Conference Sign-in Sheet, Sheet E2.0, Sheet E3.0

### GENERAL ITEMS

- 1. Bid Opening Date:** November 28, 2018  
**Time:** 2:00 p.m.  
**Location:** NBW Architect's Office  
990 John Adams, Pkwy  
Idaho Falls, Idaho 83401
2. The cost of the General building permit fee is to be included in the bid amount.
3. The contract period for construction shall be **90 calendar days** in lieu of 45 days as noted in the documents. The kitchen shall be shut down for a maximum of 60 consecutive calendar days. After the contract has been awarded the successful contractor shall be required to order and have on hand any materials, equipment, etc. for this project prior to the start of construction. If more time is required for the acquisition of all materials, equipment, etc. the contractor shall notify the architect in writing prior to the execution of the contract.
4. The pre-bid conference sign-in sheet has been attached for reference only.

### ARCHITECTURAL ITEMS

1. Sheet A1.0 has been replaced – see attached
2. Sheet A1.1 has been replaced – see attached
3. Section 14/A2.1 has been replaced – see attached AD1.1
4. Detail 11/A3.1 has been replaced – see attached AD1.2
5. Elevation 1/A2.1 has been replaced – see attached AD1.3



**MECHANICAL ITEMS**

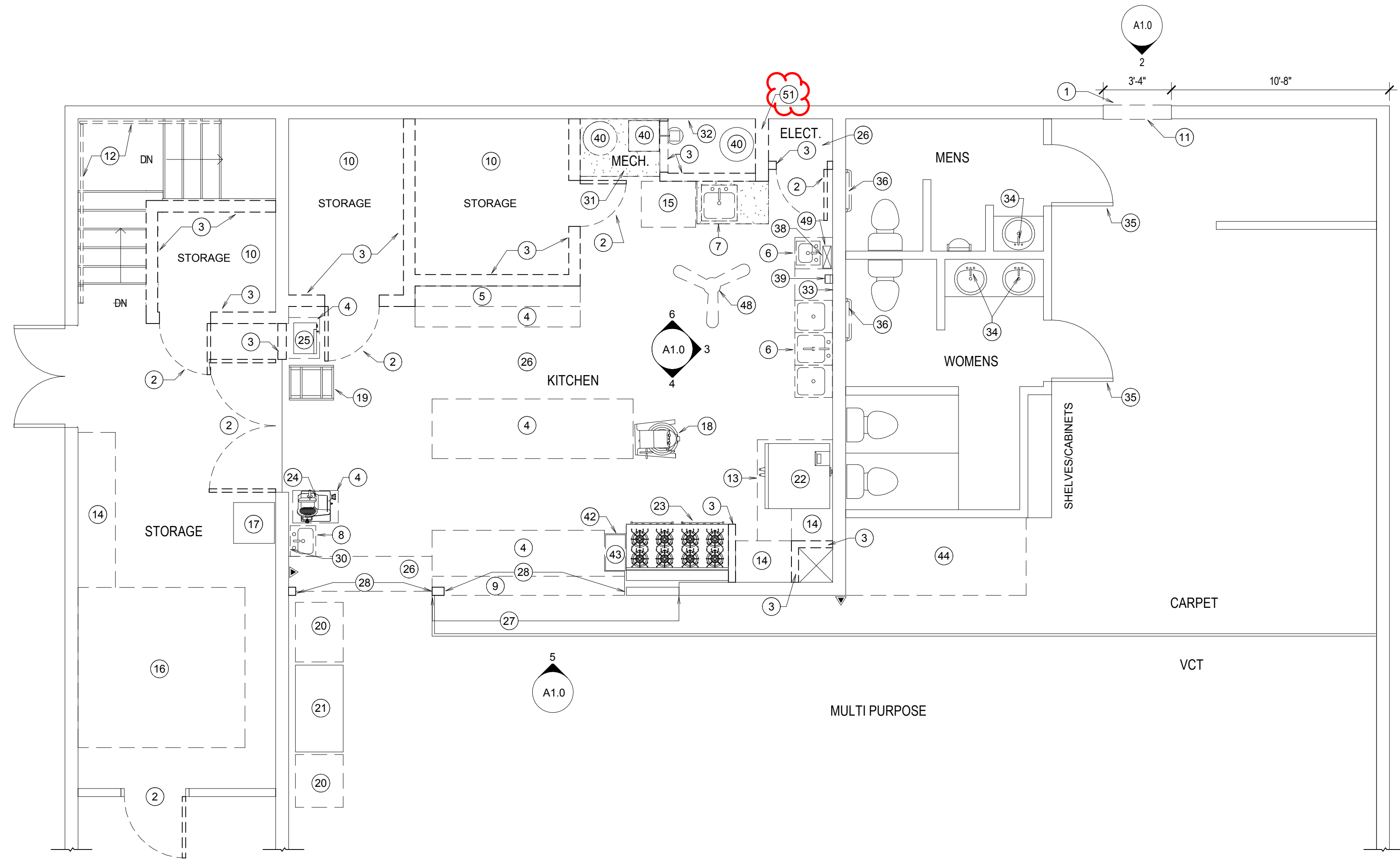
1. Specifications Section 23 3400 EXHAUST FANS - Twin City Fan has been approved as a manufacturer.

**ELECTRICAL ITEMS**

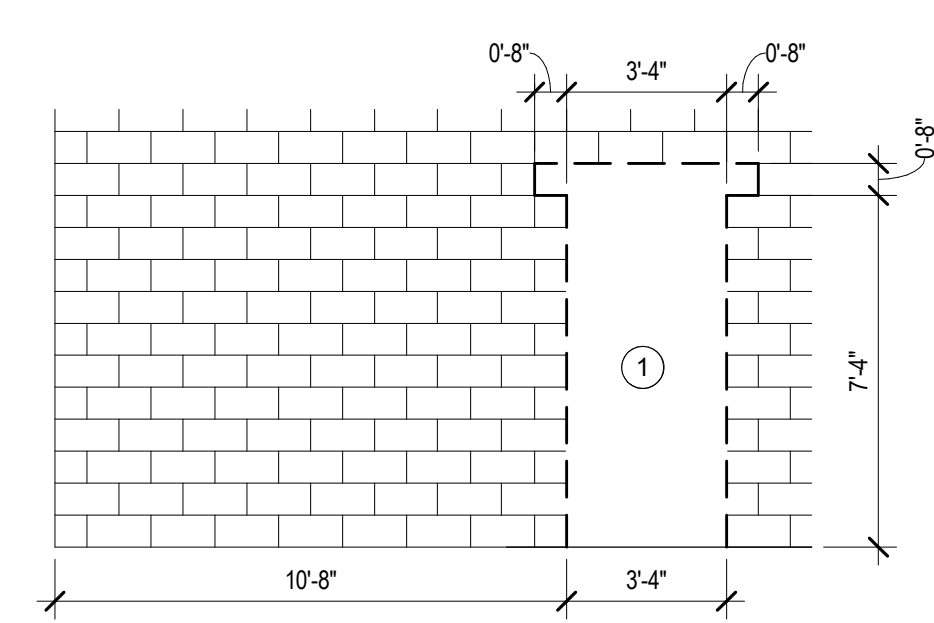
1. Sheet E2.0 has been replaced – see attached
2. Sheet E3.0 has been replaced – see attached

END OF ADDENDUM NO.1

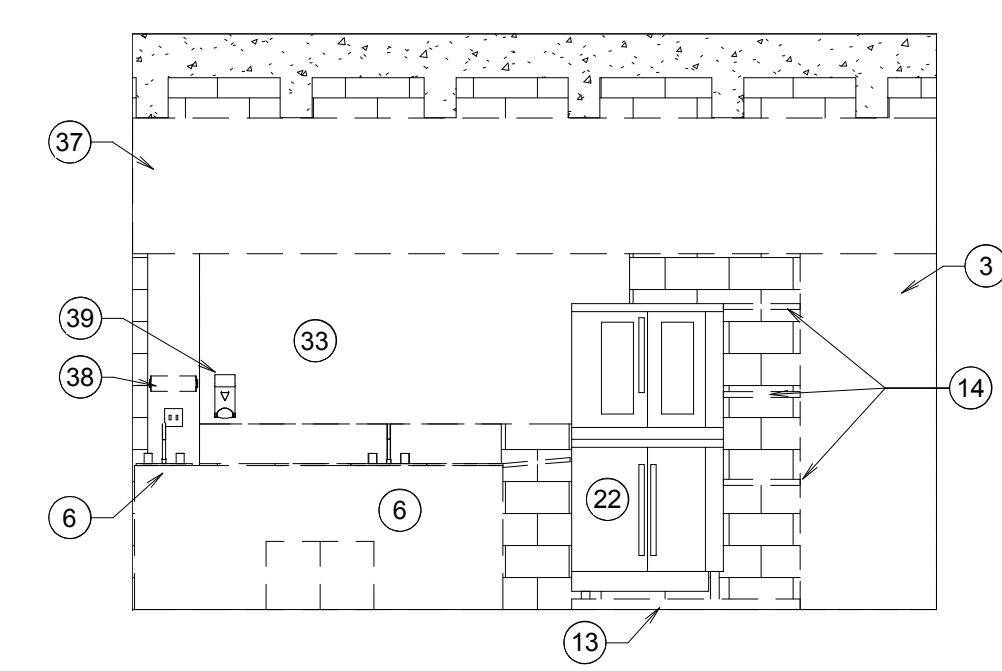




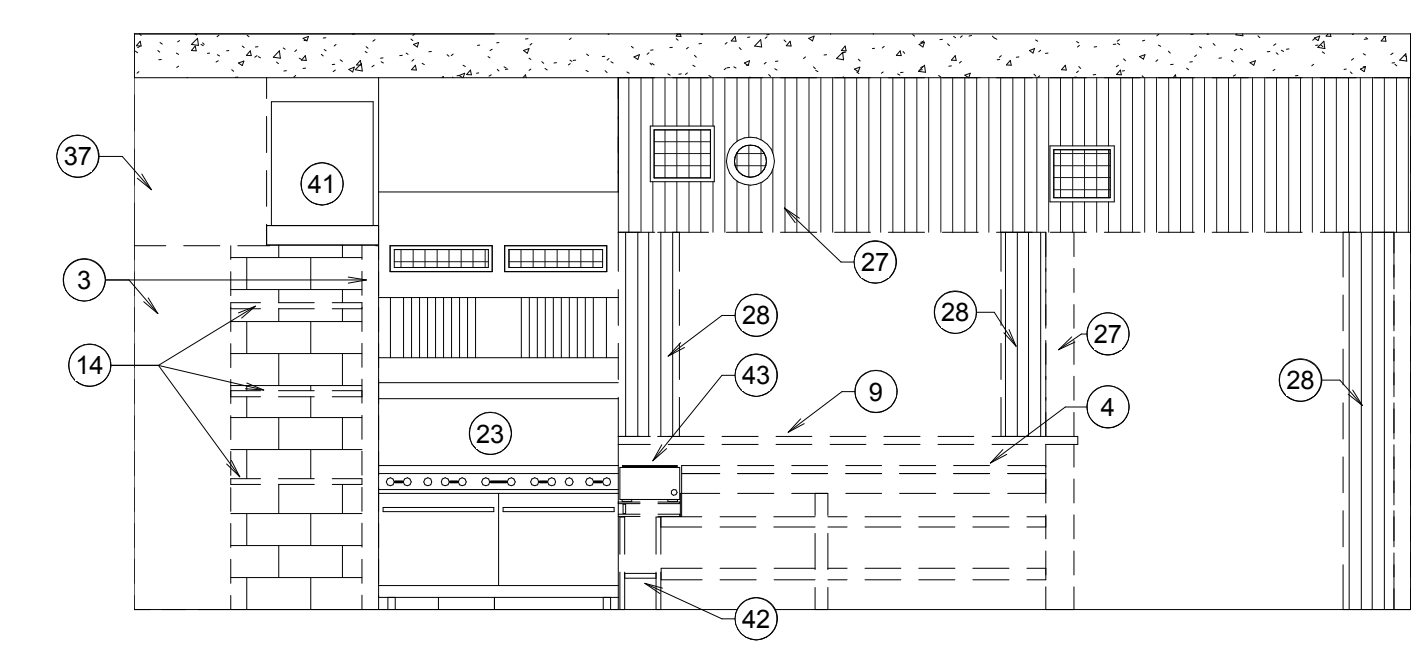
**1**  
A1.0  
**DEMOLITION PLAN**  
SCALE: 1/4" = 1'-0"



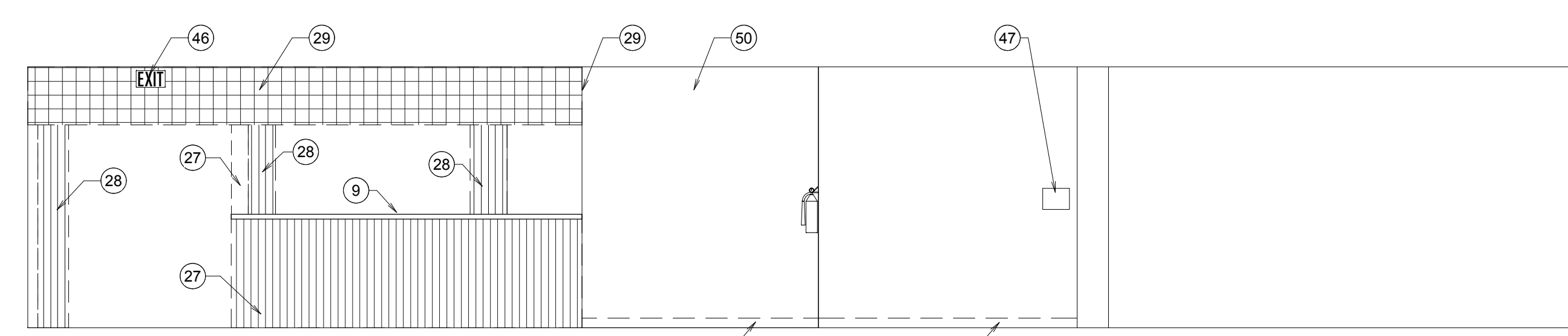
**2**  
A1.0  
**ELEVATION**  
SCALE: 1/4" = 1'-0"



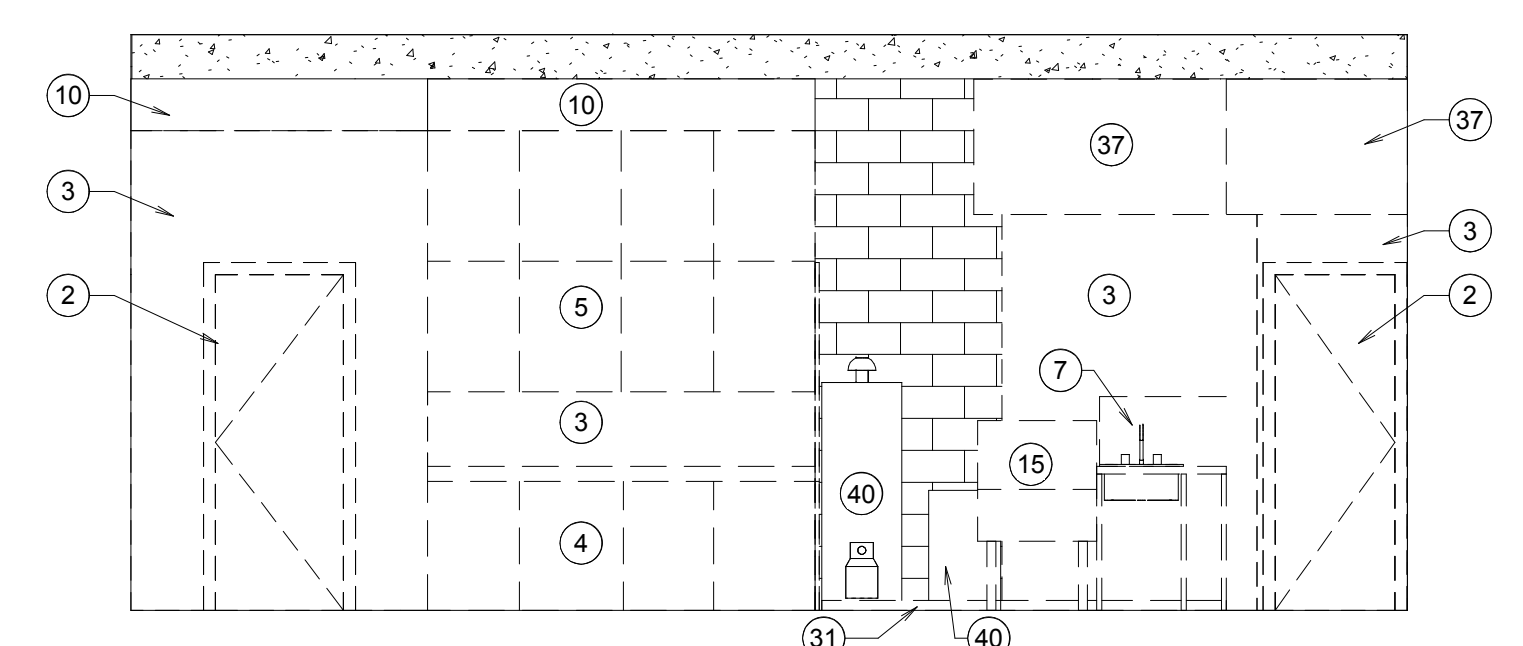
**3**  
A1.0  
**ELEVATION**  
SCALE: 1/4" = 1'-0"



**4**  
A1.0  
**ELEVATION**  
SCALE: 1/4" = 1'-0"



**5**  
A1.0  
**ELEVATION**  
SCALE: 1/4" = 1'-0"



**6**  
A1.0  
**ELEVATION**  
SCALE: 1/4" = 1'-0"

- KEYNOTES**
- REMOVE A PORTION OF THE EXISTING CMU WALL SUFFICIENT TO FRAME AND INSTALL DOOR 101
  - REMOVE DOOR, FRAME AND HARDWARE COMPLETE
  - REMOVE FRAMED WALL AND ASSOCIATED TRIM AND BASE
  - REMOVE BASE CABINETS, COUNTERTOP AND HARDWARE COMPLETE
  - REMOVE UPPER CABINETS AND HARDWARE COMPLETE
  - REMOVE EXISTING PLUMBING FIXTURE, DRAIN BOARD AND ASSOCIATED FAUX WOOD PANELING
  - REMOVE EXISTING PLUMBING FIXTURE
  - REMOVE EXISTING PLUMBING FIXTURE AND ASSOCIATED CABINET
  - REMOVE UPPER COUNTER
  - REMOVE STORAGE ROOM FLOOR, CEILING AND ANY ASSOCIATED FRAMING
  - REMOVE A PORTION OF THE WALL FURR-OUT, TRIM AND BASE SUFFICIENT TO FRAME AND INSTALL DOOR 101 - REROUTE GAS AND ELECTRIC AS REQUIRED - SEE AND MECH. AND ELEC.
  - REMOVE WOOD HANDRAIL, BRACKETS AND HARDWARE - PATCH ANY HOLES FROM THE REMOVAL OF THE HANDRAIL
  - REMOVE THE WOOD PLATFORM UNDER THE OVENS AND SHELVES
  - REMOVE WOOD SHELVES
  - REMOVE EXISTING DISHWASHER
  - REMOVE WALK-IN FREEZER AND ASSOCIATED COMPRESSOR
  - REMOVE ICE MAKER - TO BE REINSTALLED AFTER WORK IS COMPLETE
  - REMOVE MIXER - TO BE REINSTALLED AFTER WORK IS COMPLETE
  - REMOVE COOLING RACK
  - REMOVE FREEZER
  - REFRIGERATOR TO BE MOVED AFTER WORK IS COMPLETE
  - REMOVE OVENS - TO BE REINSTALLED AFTER WORK IS COMPLETE
  - REMOVE GAS STOVE - TO BE REINSTALLED AFTER WORK IS COMPLETE
  - REMOVE MEAT SLICER - TO BE REINSTALLED AFTER WORK IS COMPLETE

- KEYNOTES**
- REMOVE MICROWAVE - TO BE REINSTALLED AFTER WORK IS COMPLETE
  - REMOVE VCT FLOORING, BASE, AND ALL OTHER EXISTING FLOORING BELOW THE TILE AS WELL AS ALL ADHESIVES DOWN TO BARE CONCRETE AND PREP FLOOR TO RECEIVE NEW FLOORING
  - REMOVE FAUX WOOD PANELING - FRAMING TO REMAIN
  - REMOVE FOLDING ACCORDION DOOR, TRACK, FRAME AND HARDWARE COMPLETE
  - REMOVE FAUX WOOD SHINGLES AND ASSOCIATED PANELING BENEATH - FRAMING TO REMAIN
  - REMOVE MIRROR AND SOAP DISPENSER
  - REMOVE CONCRETE PLATFORM UNDER THE HOT WATER HEATERS, WATER SOFTENER AND SINK
  - REMOVE FRP WALL PANELING AND COAT HOOKS
  - REMOVE FRP WALL PANEL
  - REMOVE FAUCET
  - REMOVE DOOR KNOB COMPLETE
  - REMOVE GRAB BAR - PATCH ANY HOLES FROM THE REMOVAL OF GRAB BAR
  - REMOVE SOFFIT AND FRAMING COMPLETE
  - REMOVE PAPER TOWEL HOLDER
  - REMOVE SOAP DISPENSER
  - REMOVE EXISTING HOT WATER HEATER AND WATER SOFTENER - TO BE REINSTALLED - SEE MECHANICAL
  - RETAIN ANSUL FIRE SUPPRESSION SYSTEM AND SHELF
  - REMOVE WOOD STAND
  - REMOVE WARMER - TO BE REINSTALLED AFTER WORK IS COMPLETE
  - REMOVE CARPET, BASE AND ALL ADHESIVES DOWN TO BARE CONCRETE AND PREP FLOOR TO RECEIVE NEW FLOORING
  - REMOVE RUBBER BASE AND ADHESIVES
  - REMOVE EXIT SIGN
  - REMOVE TOILET ROOM SIGN
  - REMOVE CEILING FAN
  - REMOVE GYPSUM BOARD FURR OUT AROUND PLUMBING CHASE
  - REMOVE WALL PAPER MURAL
  - REMOVE CMU WALL - RELOCATE ELECTRICAL PANEL - SEE ELECTRICAL

LICENSED ARCHITECT  
93339  
JAMES WATT  
9/28/18  
PAGE 001 OF 001

**nbw architects p.a.**  
ARCHITECTURE / PLANNING / INTERIORS  
SCOTT L NELSON, A.I.A. KEVIN R BODILY, A.I.A. JAMES H WYATT, A.I.A.  
990 JOHN RIBBS PARKWAY P.O. BOX 2212 - IRIDI FALLS, ID 83402-2212  
(208) 208-5222 (208) 208-5222 (208) 208-5222

REMODEL FOR:  
**SHELLEY SENIOR CENTER**  
193 W. PINE ST.  
SHELLEY, ID 83274

PROJECT:  
SHEET TITLE:  
DEMOLITION PLAN & ELEVATIONS

REVISIONS

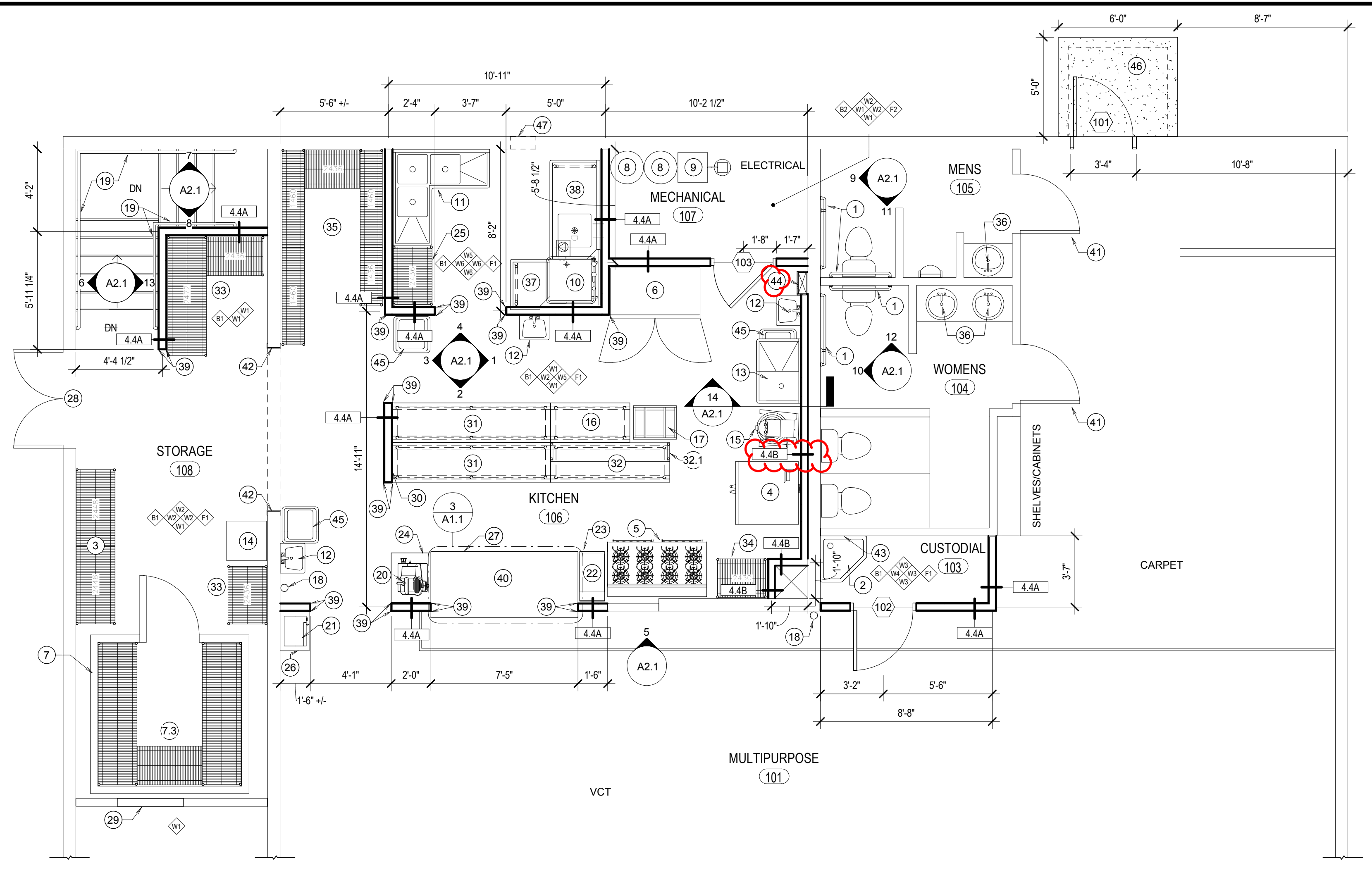
NO.	DESCRIPTION

PROJECT NO.  
18023  
DATE:  
OCTOBER 2018  
DRAWN BY:  
NRH  
CHECKED BY:  
JHW

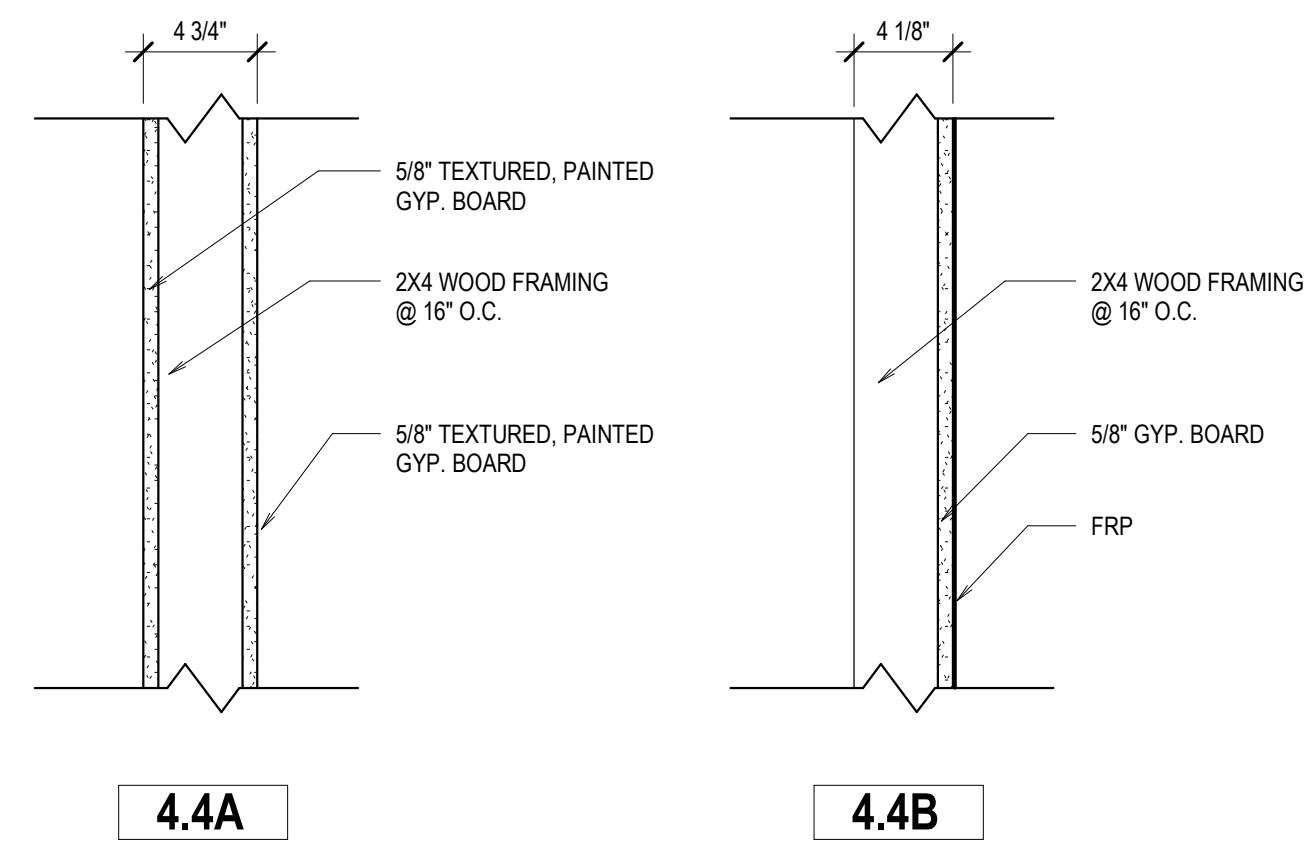
DRAWING NO.: AD#1

**A1.0**  
REVISION 1

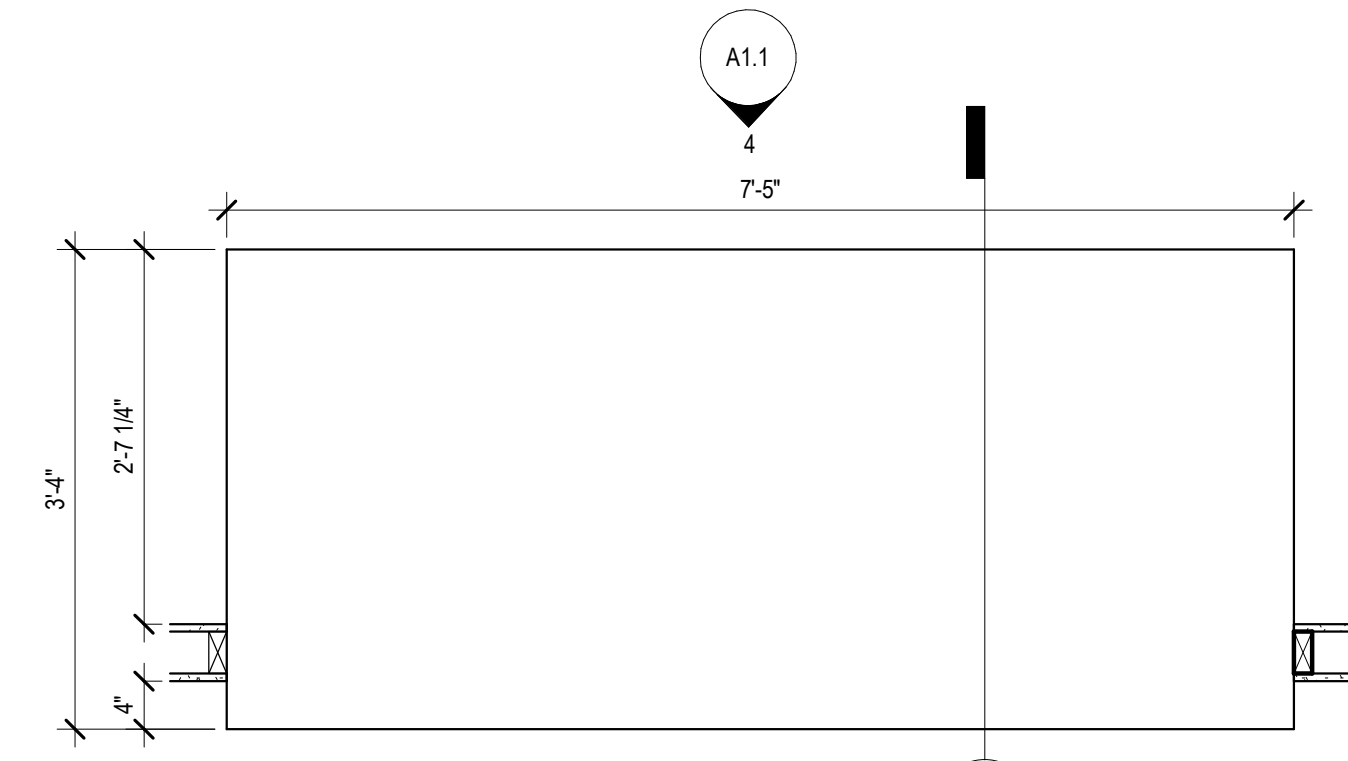
REVISED 11/20/18



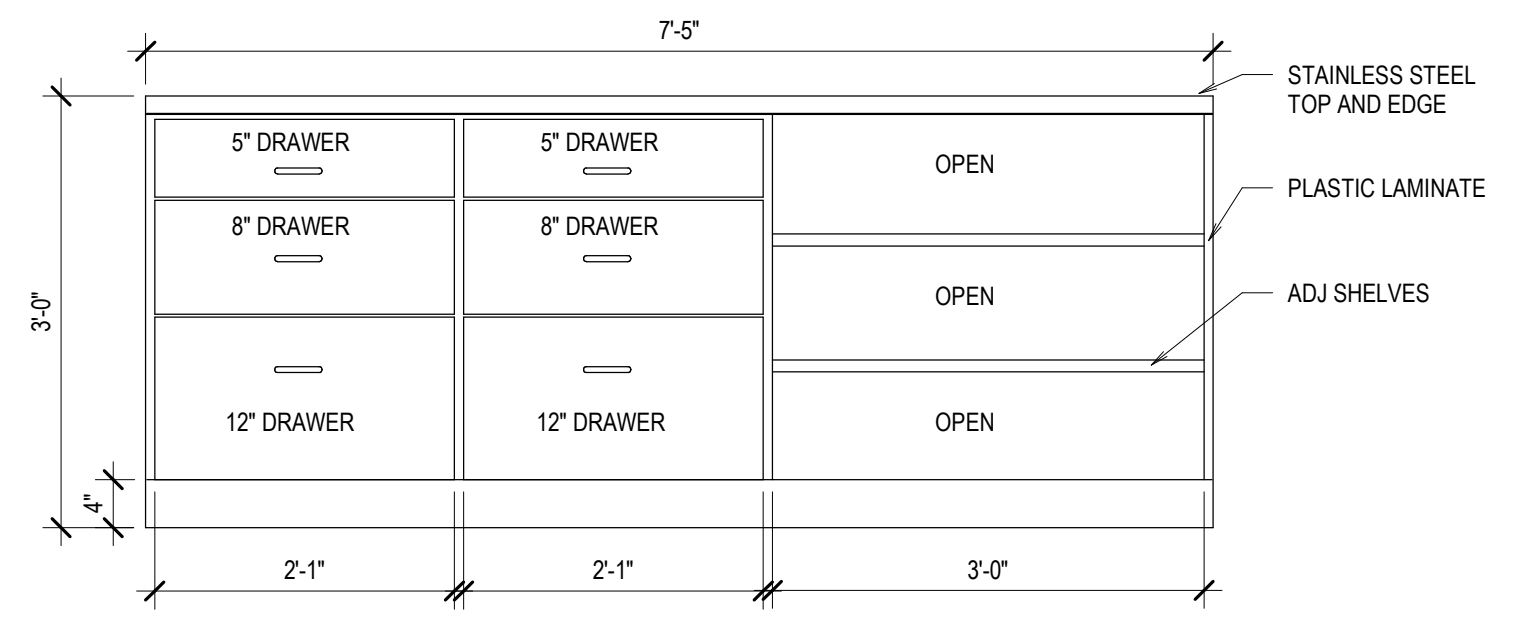
**1 FLOOR PLAN**  
SCALE: 1/4" = 1'-0"



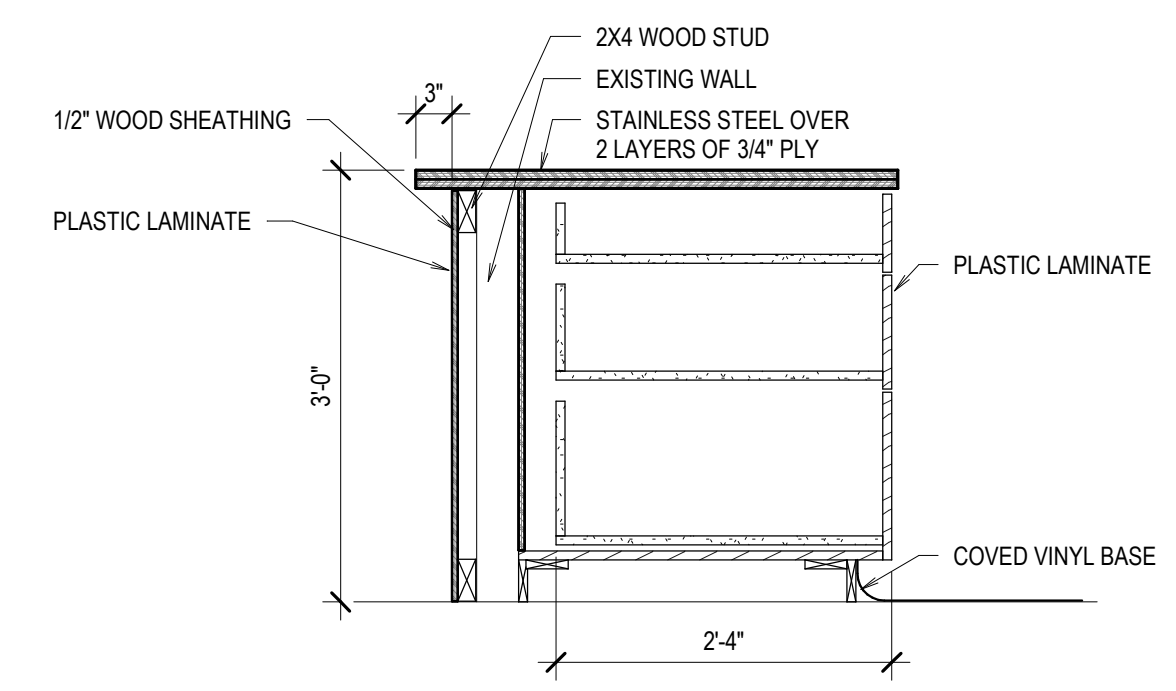
**2 WALL TYPES**  
SCALE: 1 1/2" = 1'-0"



**3 MILLWORK PLAN**  
SCALE: 3/4" = 1'-0"



**4 MILLWORK ELEVATION**  
SCALE: 3/4" = 1'-0"



**5 MILLWORK SECTION**  
SCALE: 3/4" = 1'-0"

- KEYNOTES**
- PROVIDE AND INSTALL GRAB BARS PER REQUIRED ANSI MOUNTING HEIGHTS. PROVIDE BLOCKING IN WALL AS REQUIRED. PATCH, PAINT, AND REPAIR WALL AS NECESSARY
  - MOP SINK
  - WIRE SHELVING UNIT - OLYMPIC 10 SHELVES 24" X 48" MODEL: J2448C 4 POSTS 86" TALL MODEL: J86C 10" S" HOOKS MODEL: J9995Z
  - REINSTALL EXISTING CONVECTION OVENS
  - REINSTALL EXISTING STOVE
  - EXISTING REFRIGERATOR
  - CUSTOM SELF-CONTAINED WALK-IN FREEZER
  - WIRE SHELVING UNITS - OLYMPIC 1 SHELF 24" X 60" MODEL: J2460K EPOXY 10 POSTS 86" TALL MODEL: J86K EPOXY 4 SHELVES 24" X 48" MODEL: J2448K EPOXY 4 SHELVES 24" X 36" MODEL: J2436K EPOXY
  - EXISTING HOT WATER HEATER
  - EXISTING WATER SOFTENER
  - DISHWASHER - JACKSON WWS MODEL: TEMPSTAR HH-E VENTLESS
  - THREE COMPARTMENT CORNER SINK - JOHN BOOS MODEL: 3PBCS1620-2D18
  - HAND WASH SINK - KROWNE METAL MODEL: HS-2L
  - PREP SINK - JOHN BOOS MODEL: E1S8-1620-12L18-X
  - EXISTING ICE MAKER
  - EXISTING MIXER
  - FLAT TOP STAINLESS STEEL TABLE 48" X 24" - JOHN BOOS MODEL: FBLG4824-X
  - COOLING RACK - WINHOLT EQUIPMENT MODEL: AL-1820B
  - EXISTING FIRE EXTINGUISHER
  - WALL MOUNTED HANDRAIL
  - EXISTING MEAT SLICER
  - EXISTING MICROWAVE
  - EXISTING WARMER
  - STAINLESS STEEL FILLER TABLE 30" X 15" - JOHN BOOS MODEL: EFT8-3015-X
  - STAINLESS STEEL TABLE 30" X 24" - JOHN BOOS MODEL: FBLG3024-X
  - WIRE SHELVING UNIT - OLYMPIC 5 SHELVES 24" X 36" MODEL: J2436C 4 POSTS 86" TALL MODEL: J86C EPOXY

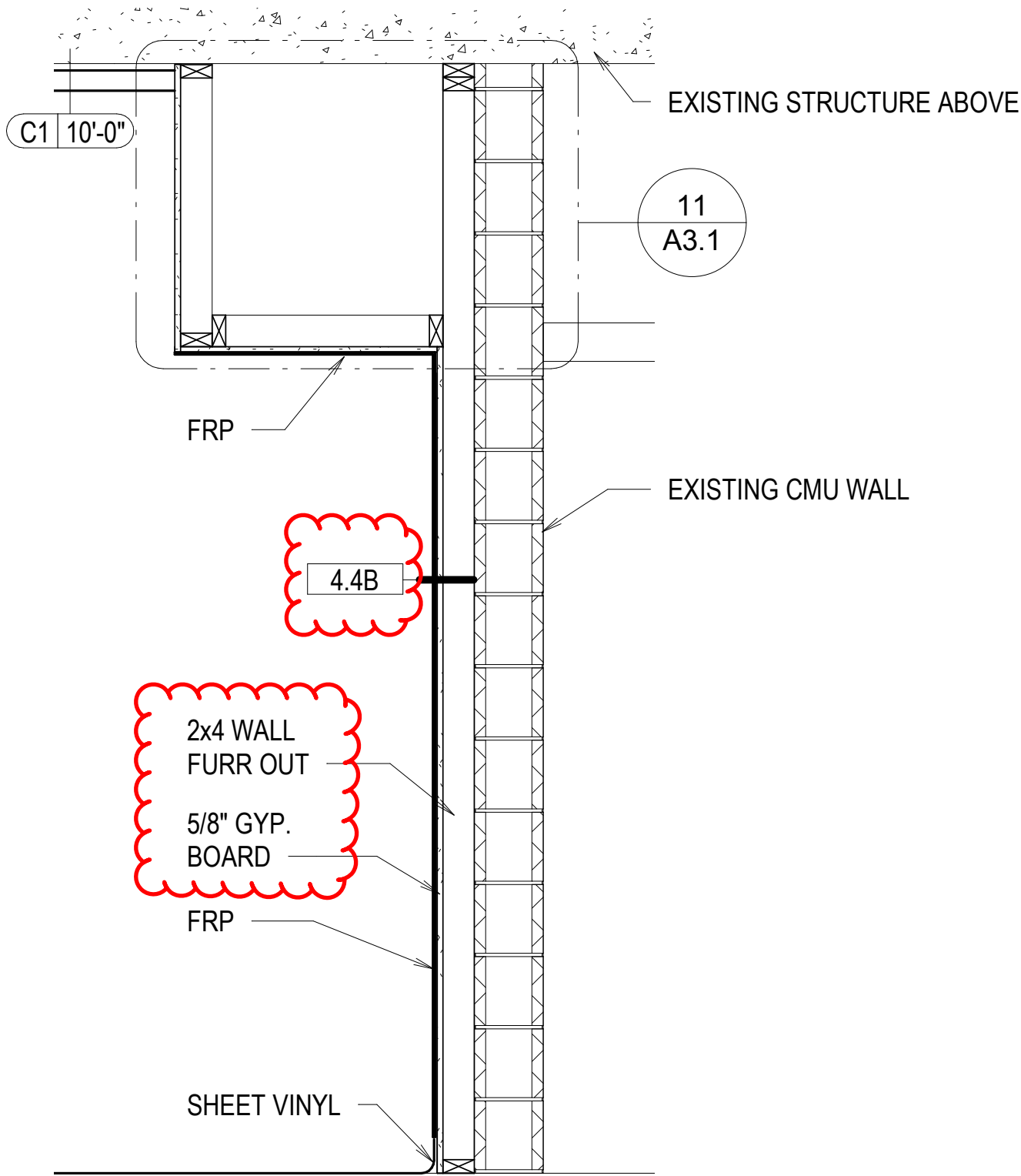
- KEYNOTES**
- FLAT TOP STAINLESS STEEL TABLE 30" X 18" - JOHN BOOS MODEL: FBLG3018-X
  - MILLWORK
  - PROVIDE NEW WEATHERSTRIPPING AND SWEEPS
  - INFILL THE DOOR OPENING WITH WOOD STUDS AND INSULATION BETWEEN THE STUDS - COVER WITH GYPSUM BOARD
  - WALL TO BE 4'-0" TALL - SEE DETAILS 158/16/3.1
  - FLAT TOP STAINLESS STEEL TABLE 96" X 24" - JOHN BOOS MODEL: FBLG9624-X
  - FLAT TOP STAINLESS STEEL TABLE 72" X 24" - JOHN BOOS MODEL: FBLG7224-X
  - 72" X 12" OVERSHELF - JOHN BOOS MODEL: OS-ES-1272
  - WIRE SHELVING UNITS - OLYMPIC 5 SHELVES 24" X 72" MODEL: J2472C 10 SHELVES 24" X 36" MODEL: J2436C 8 POSTS 86" TALL MODEL: J86C
  - WIRE SHELVING UNIT - OLYMPIC 15 SHELVES 14" X 60" MODEL: J1460C 10 POSTS 86" TALL MODEL: J86C 5 SHELVES 24" X 36" MODEL: J2436C 20" S" HOOKS MODEL: J9995Z
  - REPLACE FAUCETS AND COVER PIPES PER ADA REQUIREMENTS - SEE MECH.
  - CLEAN DISHTABLE 26" X 30" - JOHN BOOS MODEL: EDTC8-S30-R26-X
  - SOILED DISHTABLE 60" X 30" - JOHN BOOS MODEL: JDTS-20-60L-X
  - STAINLESS STEEL WALL CORNER GUARD 2" X 2" - SEE 12/A3.1
  - STAINLESS STEEL COUNTER TOP
  - INSTALL ADA COMPLIANT LEVERS - SEE MECH.
  - STAINLESS STEEL - SEE DETAIL 13/A3.1
  - MOP RACK - MOUNTED 60" ABOVE FINISH FLOOR
  - EXISTING PLUMBING CHASE - FURR AROUND WITH FRP OVER GYPSUM BOARD
  - EXISTING WASTE RECEPTACLE
  - CONCRETE LANDING - 4000 PSI DESIGN MIX - SEE DETAIL 17/A3.1
  - CUT CMU WALL AS REQUIRED TO INSTALL NEW EXHAUST FAN

**FINISH SCHEDULE KEY**

WALL FINISH		BASE FINISH	
W1	TEXTURED/PAINTED GYP. BOARD	B1	4" SHEET VINYL COVERED
W2	PAINTED CMU	B2	4" COVERED RUBBER
W3	FRP OVER GYP. BOARD UP TO 6'-0" - W1 ABOVE 6'-0"		
W4	FRP OVER CMU UP TO 6'-0" - PAINTED CMU ABOVE 6'-0"	<b>FLOOR FINISH</b>	
W5	FRP OVER CMU	F1	SHEET VINYL
W6	FRP OVER GYP. BOARD	F2	CONCRETE

REVISIONS

NO.	DESCRIPTION



NOT TO SCALE

PROJECT:  
SHELLEY SENIOR CENTER

SHEET TITLE:  
SECTION 14/A2.1

**nbwarchitects p.c.**  
ARCHITECTURE / PLANNING / INTERIORS

SCOTT L NIELSON, A.I.A. KEVIN R BODILY, A.I.A. JAMES H WYATT, A.I.A.

990 JOHN ADAMS PARKWAY P.O. BOX 2212 - IDAHO FALLS, IDAHO 83402-2212

(P) 208-522-8779 (F) 208-522-8785 (W) nbwarchitects.com

PROJECT NO.  
18023

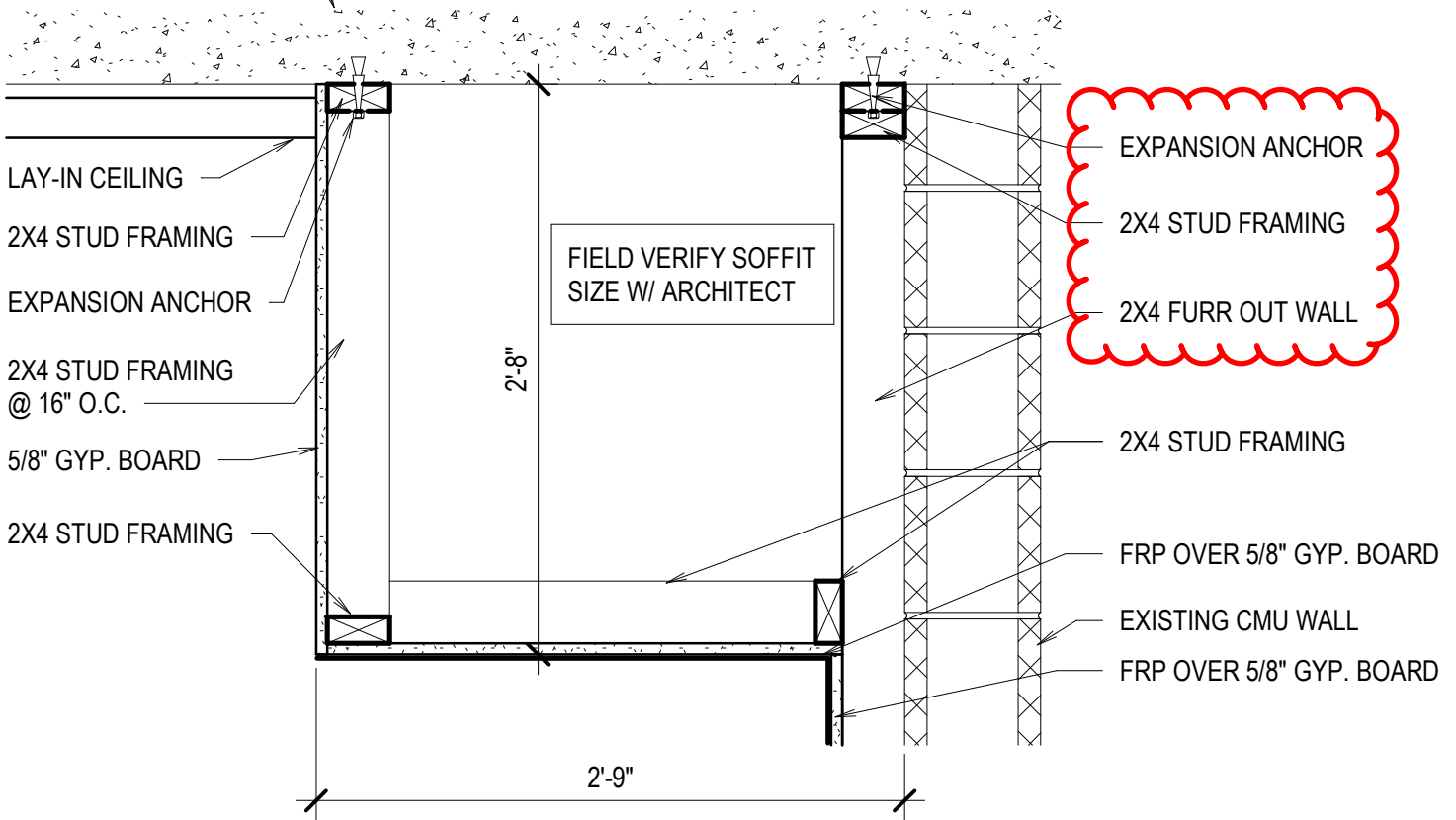
DATE:  
11/12/18

DRAWN BY:  
NRH

DRAWING NO.:

**AD1.1**

EXISTING CONCRETE  
STRUCTURE



NOT TO SCALE

PROJECT:  
SHELLEY SENIOR CENTER

SHEET TITLE:  
DETAIL 11/A3.1

 **nbwarchitects p.a.**  
ARCHITECTURE / PLANNING / INTERIORS

SCOTT L NIELSON, A.I.A. KEVIN R BODILY, A.I.A. JAMES H WYATT, A.I.A.

990 JOHN ADAMS PARKWAY P.O. BOX 2212 - IDAHO FALLS, IDAHO 83402-2212

(P) 208-522-8779 (F) 208-522-8785 (W) nbwarchitects.com

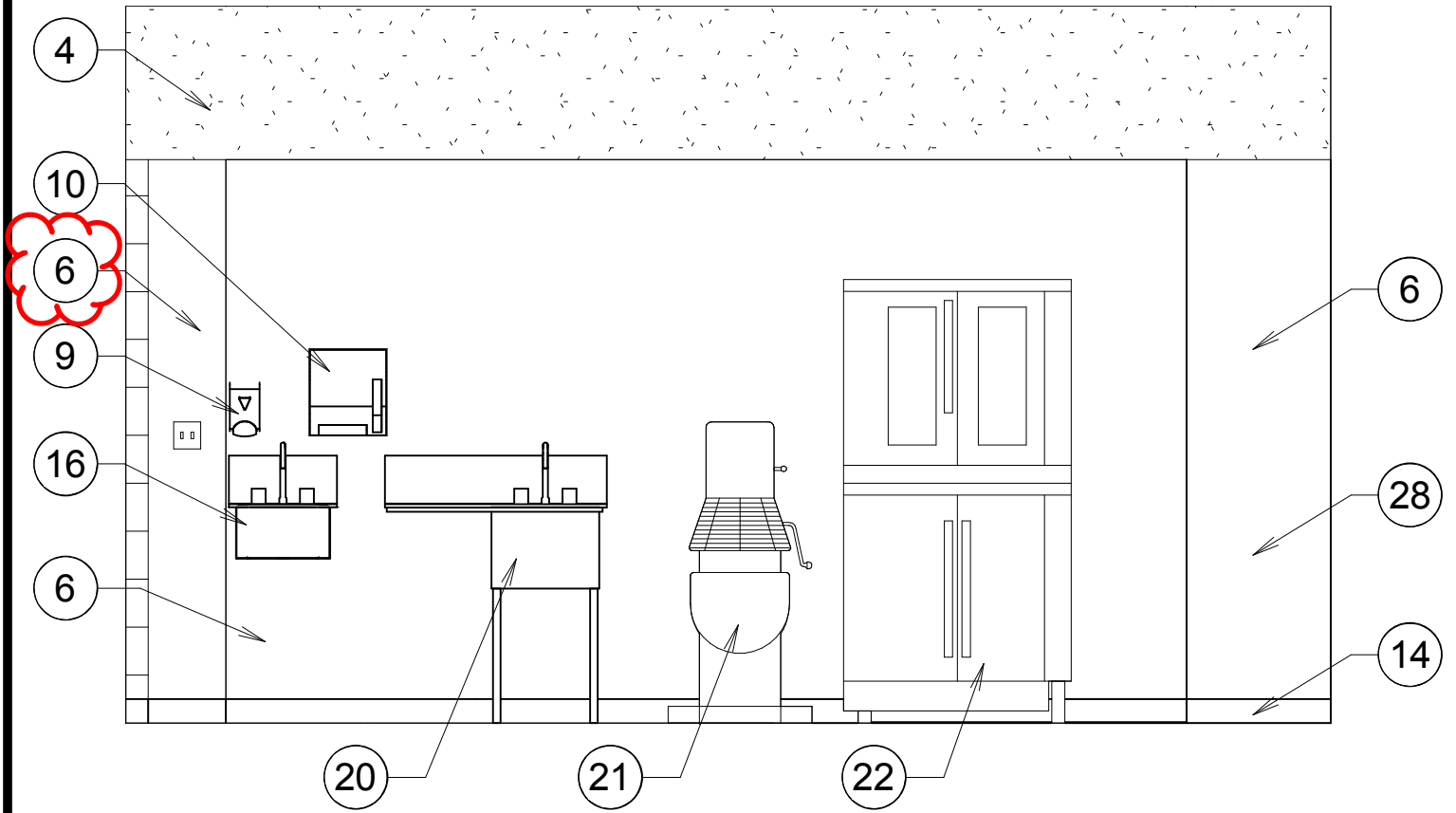
PROJECT NO.  
18023

DATE:  
11/12/18

DRAWN BY:  
NRH

DRAWING NO.:

**AD1.2**



NOT TO SCALE

PROJECT:  
SHELLEY SENIOR CENTER

SHEET TITLE:  
ELEVATION 1/A2.1

**nbwarchitects p.c.**  
ARCHITECTURE / PLANNING / INTERIORS

SCOTT L NIELSON, A.I.A. KEVIN R BODILY, A.I.A. JAMES H WYATT, A.I.A.

990 JOHN ADAMS PARKWAY P.O. BOX 2212 - IDAHO FALLS, IDAHO 83402-2212

(P) 208-522-8779 (F) 208-522-8785 (W) nbwarchitects.com

PROJECT NO.  
18023

DATE:  
11/12/18

DRAWN BY:  
NRH

DRAWING NO.:

**AD1.3**

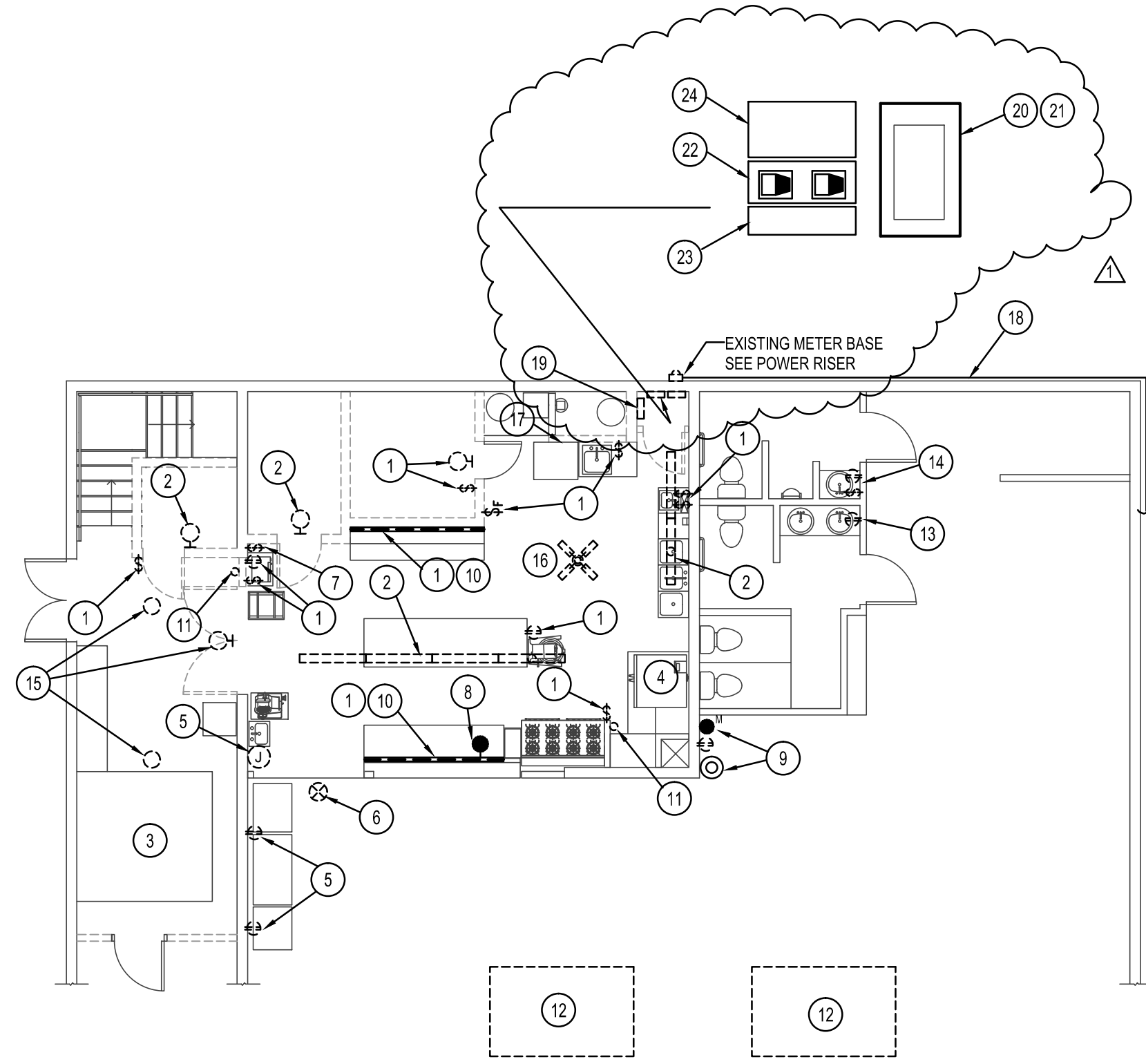
## Pre-Bid Conference Sign-in Sheet

Project Name: Shelley Senior Center - 18023

In Attendance:	Company:
1. Joe Lazdauskas	ASI
2. Blake Ford	BFC — 1 set of Plans
3. Chris Clark	CR Clark — 1 set of Plans
4. Richard Stephenson	Ruteman-Hall
5. Brent Horsley	Horsley Elec. Plans
6. RICH KENNEDY	RIVERS WEST CONST. 1 set Plans
7. Charlie Anderson	Midgley-Huber
8. Ryan Jun	BB-D
9. Eric Waters	B.B-D
10. Shara Hawke	JVS Const. — 1 set of plans
11. MICHAEL PATTON	SICOB
12. James Wyatt	NBW
13. Nick Hansen	NBW
14. Anita	Shelley Senior Center
15. Allen King	Shelley Senior Center
Andrew Carrol	BSR



11/20/2018 3:08:15 PM \\PESERVER\Payne\_Engineering\_Data\2018\Shelley\_Senior\_Center - 1859\10\_Working Drawings\1859E1.dwg

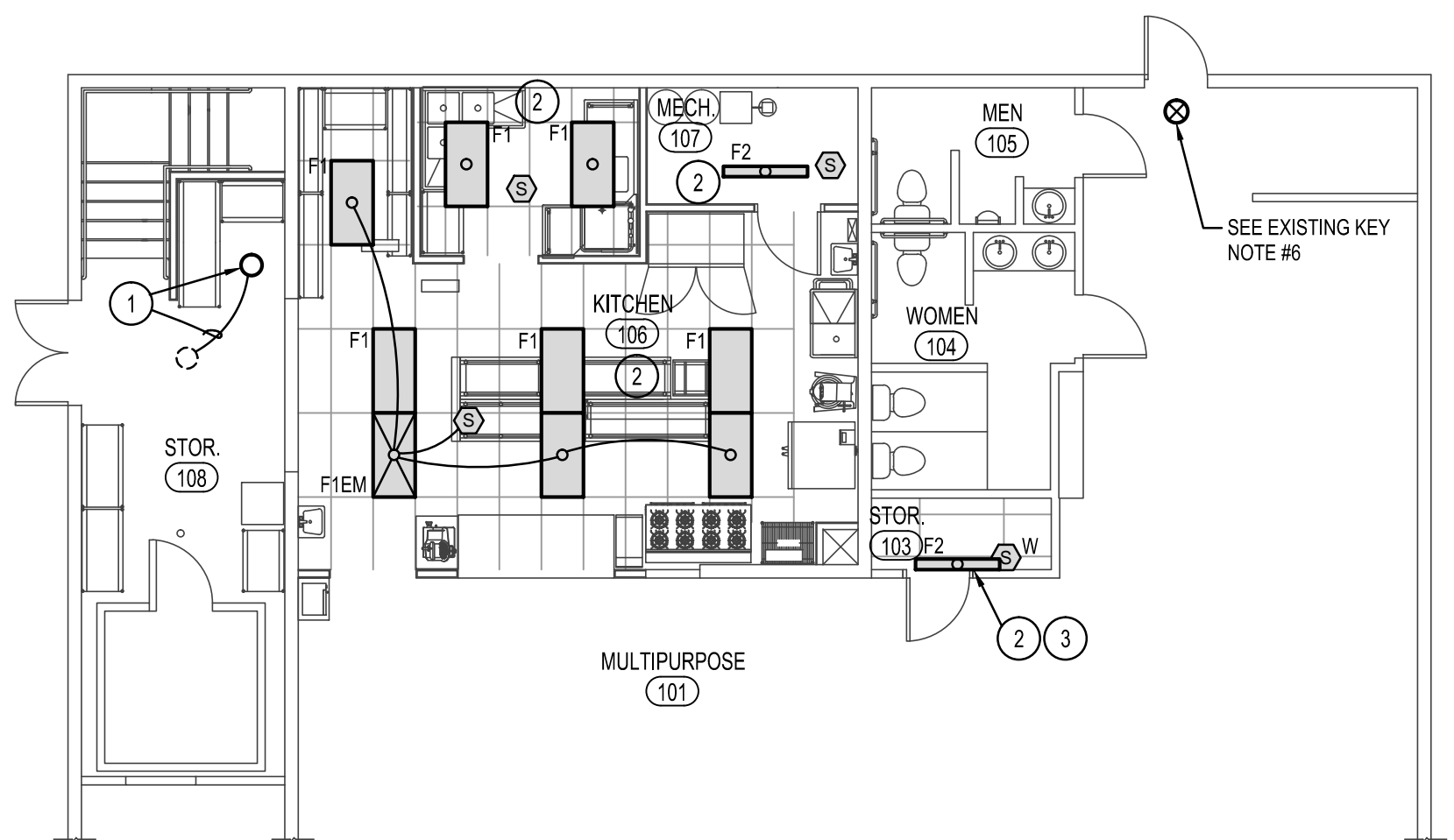


### EXISTING ELECTRICAL KEY NOTES

- 1 DISCONNECT AND REMOVE EXISTING DEVICE IN CONFLICT WITH REMODEL. REMOVE ASSOCIATED CONDUIT AND WIRE. MAINTAIN OR REESTABLISH ELECTRICAL CONTINUITY TO DOWNSTREAM DEVICES TO REMAIN.
- 2 DISCONNECT AND REMOVE EXISTING LIGHTING IN CONFLICT WITH REMODEL. MAINTAIN CIRCUIT FOR USE WITH NEW LIGHTING.
- 3 DISCONNECT EXISTING FREEZER. REMOVE ALL ASSOCIATED CONDUIT AND CONDUCTORS BACK TO SOURCE.
- 4 PROTECT OR REESTABLISH ELECTRICAL SERVICE TO EXISTING KITCHEN EQUIPMENT TO REMAIN.
- 5 EXISTING DEVICE TO REMAIN. MAINTAIN OR REESTABLISH ELECTRICAL SERVICE TO THIS DEVICE.
- 6 DISCONNECT AND REMOVE EXISTING EXIT SIGN. REMOVE ALL ASSOCIATED CONDUIT AND WIRE. RELOCATE TO NEW EXIT IN NORTH WALL. CONNECT TO UNSWITCHED LEG OF LIGHTING CIRCUIT.
- 7 DISCONNECT AND REMOVE EXISTING SWITCH AND ASSOCIATED SURFACE RACEWAY.
- 8 EXISTING SPEAKER. CAREFULLY REMOVE AND REINSTALL IN NEW CEILING. EXTEND SPEAKER WIRE AS NECESSARY.
- 9 E.C. SHALL INTERCEPT EXISTING STAND ALONE SMOKE DETECTOR, RECEPTACLE AND MIC JACK. RELOCATE EACH TO NEW WALL OF STORAGE ROOM. EXTEND ALL POWER AND SIGNAL CABLE AND RECONNECT.
- 10 REMOVE EXISTING PLUG STRIP IN CONFLICT WITH REMODEL. REMOVE ALL ASSOCIATED CONDUIT.
- 11 REMOVE EXISTING SURFACE RACEWAY IN CONFLICT WITH REMODEL. RESTORE ELECTRICAL SERVICE TO EXISTING DEVICES TO REMAIN.
- 12 CAREFULLY DISCONNECT EXISTING RTUS FOR REPLACEMENT. RECONNECT NEW UNITS TO EXISTING CIRCUITS.
- 13 REPLACE EXISTING DEVICE AND PLATE WITH NEW GFCI RECEPTACLE.
- 14 REPLACE EXISTING SWITCH AND RECEPTACLE WITH NEW GFCI RECEPTACLE, SWITCH AND PLATE.
- 15 EXISTING LIGHT FIXTURE IN THIS ROOM TO REMAIN. PROTECT DURING CONSTRUCTION. REPLACE EXISTING OCC. SENSOR WITH NEW.
- 16 DISCONNECT AND REMOVE EXISTING PADDLE FAN.
- 17 DISCONNECT AND REMOVE ALL POWER ASSOCIATED WITH EXISTING DISHWASHER.
- 18 E.C. SHALL REWORK EXISTING CIRCUIT TO ACCOMMODATE NEW EXIT DOOR. INTERCEPT, THEN ROUTE UP AND OVER DOOR. FIELD VERIFY SIZE AND CONDITIONS PRIOR TO BID.
- 19 CAREFULLY DISCONNECT EXISTING PANEL FOR REMOVAL OF WING WALL. REINSTALL ON NORTH WALL. SEE SHEET E3.0.
- 20 EXISTING PANEL TO REMAIN.
- 21 PROVIDE AND INSTALL A 60A 2P BREAKER IN EXISTING PANEL FOR EXISTING CONVECTION OVEN.
- 22 REMOVE EXISTING BREAKER BOX. INTERCEPT AND EXTEND EXISTING CIRCUITS TO EXISTING PANEL.
- 23 EXISTING J-BOX TO REMAIN.
- 24 DISCONNECT AND REMOVE EXISTING SPLICE BOX.

### LIGHTING KEY NOTES

- 1 PORCELAIN SOCKET WITH LED LAMP. CONNECT TO EXISTING LIGHTING CIRCUIT AND CONTROLS.
- 2 PROVIDE AND INSTALL NEW LIGHTING AND CONTROLS AS SHOWN. CONNECT TO EXISTING LIGHTING CIRCUIT.
- 3 MOUNT ON WALL ABOVE DOOR.



### LIGHT FIXTURE SCHEDULE

TYPE	DESCRIPTION	MOUNT	VOLT	LAMPS *	MFGR.	CATALOG #	NOTES
F1	2x4 FLAT PANEL	RECESSED	120/277	INCLUDED	LITHONIA	EPANL 24 40L 40K 80CRI MIN10 2T MVOLT	
F2	LED UTILITY STRIP LIGHT	CEILING	120/277	INCLUDED	LITHONIA	CLXL48-4000LMSEFRDL-MVOLT-GZ10-40K-80CRI-WH	

#### FIXTURE NOTES:

- 1 CONNECT ALL EXIT AND EMERGENCY LIGHTS TO UNSWITCHED LEG OF EMERGENCY POWER LIGHTING CIRCUIT IN AREA.
- 2 THE SUFFIX "EM" DENOTES A FIXTURE TO BE SUPPLIED WITH AN EMERGENCY BATTERY DRIVER. CONNECT FIXTURES TO OPERATE WITH SURROUNDING FIXTURES UNDER NORMAL OPERATING CONDITIONS.
- 3 EC SHALL COORDINATE ALL FIXTURE TYPES AND FINISHES WITH OWNER PRIOR TO ORDERING.

**nbwarchitects p.a.**  
 ARCHITECTURE / PLANNING / INTERIORS  
 SCOTT L. NIELSON, A.I.A., KEVIN R. BODILY, A.I.A., JAMES H. WYATT, A.I.A.  
 910 JOHN BOHNS PARKWAY, P.O. BOX 2312 - IDAHO FALLS, IDAHO 83402-2312  
 (208) 522-8778 (208) 522-8785 (208) 522-8786

REMODEL FOR:  
**SHELLEY SENIOR CENTER**  
 193 W. PINE ST.  
 SHELLEY, ID 83274  
 ELECTRICAL PLANS

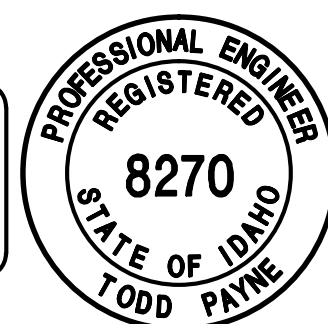
PROJECT:  
 SHEET TITLE:

REVISIONS
ADDENDUM #1

PROJECT NO.  
**18023**  
 DATE  
**OCTOBER 2018**  
 DRAWN BY:  
**mmp**  
 CHECKED BY:  
**tep**

DRAWING NO.: **AD#1**

ORIGINAL SIGNED BY:  
 TODD E. PAYNE  
 DATED ORIGINAL SIGNED:  
 9-25-18  
 ON FILE AT:  
 PAYNE ENGINEERING INC.



P.E. JOB #1859

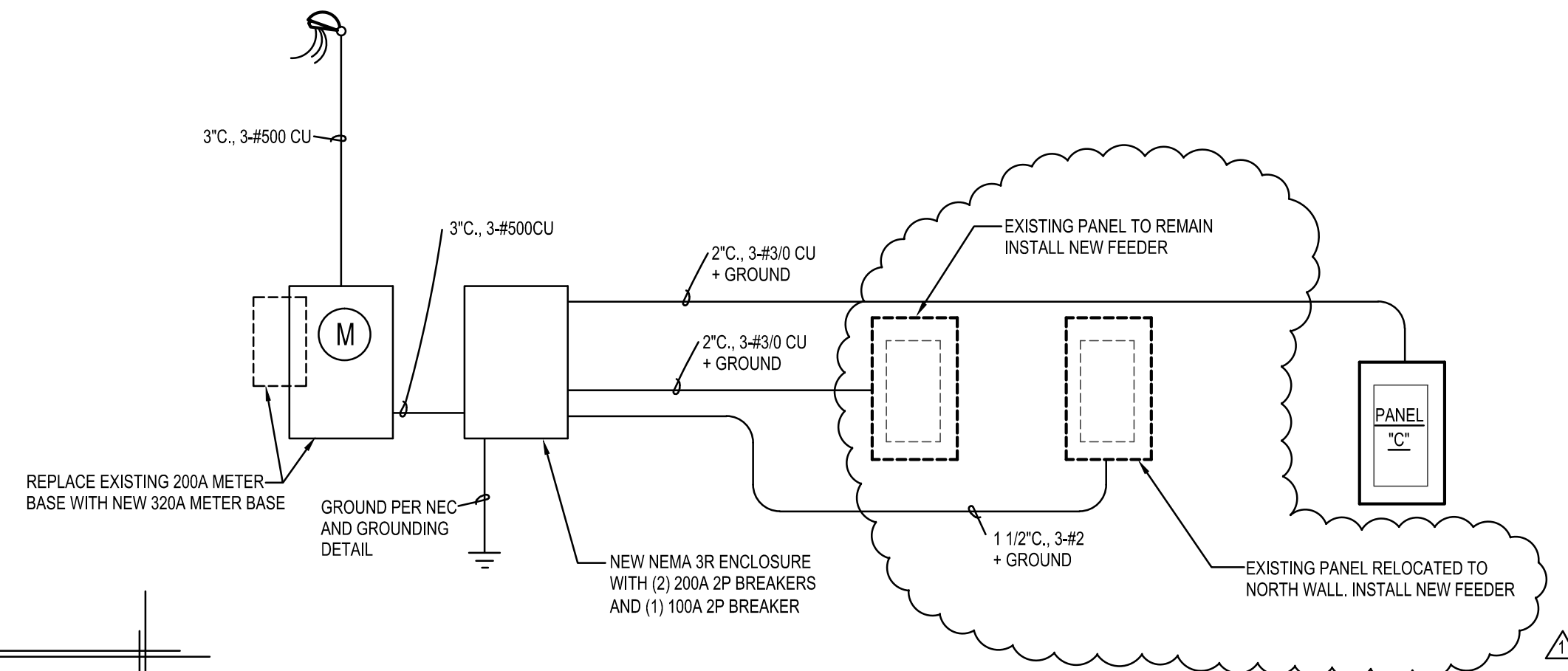
REVISED 11/20/18

**IPAYNE**  
 Engineering Inc.  
 Consulting Engineers

1923 E. Center  
 Pocatello, Idaho 83201  
 tel (208) 232-4439 fax (208) 232-1435

**E2.0**  
 REVISION 1

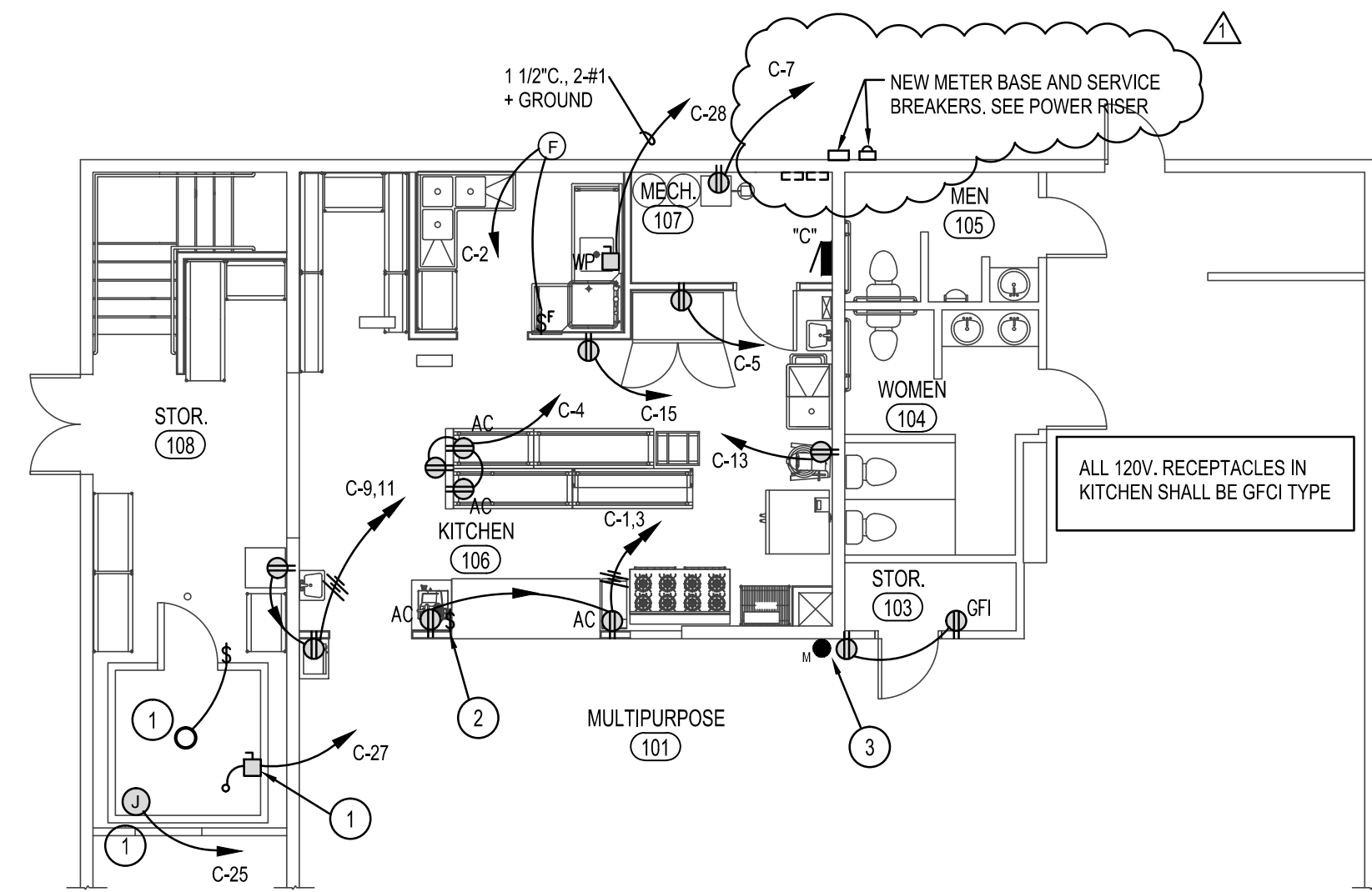
11/20/2018 3:08:20 PM \\PESERVER\Payne\_Engineering\_Data\2018\Shelley\_Senior\_Center - 1859\10\_Working Drawings\1859E1.dwg



**SPECIAL NOTE:**  
E.C. SHALL MAKE ALL REQUIRED ARRANGEMENTS WITH POWER COMPANY FOR NEW SERVICE. COORDINATE ALL OUTAGES WITH OWNER IN ADVANCE.

**POWER RISER DIAGRAM**  
NO SCALE

SERVICE LOAD CALCULATIONS	
PEAK DEMAND AS REPORTED BY POWER COMPANY	= 27 KW
27KW x 1.25	= 6.75 KW
ADDED LOAD	= 32.5 KW
<b>TOTAL</b>	<b>66.25 KW</b>
SERVICE SIZE	
66.25 KW @ 120/240 1Ø 3W	= 276 AMPS
RECOMMENDED SERVICE SIZE	= 320A METER



**POWER KEY NOTES**

- E.C. SHALL MAKE ALL REQUIRED CONNECTIONS TO NEW FREEZER, INCLUDING OUTDOOR CONDENSER AND INDOOR FAN COIL. PROVIDE AND INSTALL 120V, 20A CIRCUIT FOR LIGHT FIXTURE. INSTALL HEAT TRACE ON CONDENSATE LINE. COORDINATE WITH FREEZER SUPPLIER.
- PROVIDE AND INSTALL A NEW TOGGLE SWITCH FOR HOOD FAN CONTROL. LOCATE ADJACENT TO ANSUL SYSTEM PULL STATION. RECONNECT TO CONTROL HOOD FAN.
- SEE EXISTING PLAN FOR WORK WITH MIC JACK, SMOKE DETECTOR AND OUTLET.

PANEL "C"												
CLASS		120/240V 1Ø		MAIN BRKR.		AMPS		FEED BOTTOM		SURFACE		
LOCATION		LOAD CENTER		MAIN LUGS ONLY		200		FEED TOP		FLUSH		
MAKE/MODEL		QO LOAD CENTER		MAIN SW.		AMPS		DIMENSIONS		20"X30"X5 3/4"		
LOAD NAME	CIR NO	LOAD WATTS	BRK AMP	LOAD/POLE	A	B	LOAD WATTS	CIR NO	LOAD NAME	BRK AMP	LOAD WATTS	
RECEPTACLES	1	1000	20	1	1500			1	20	500	2	EXHAUST FAN
	3	1000				1000		4			4	SPARE
	5	1000			1000			6			8	
	7	1000			1000			10			12	PREPARED SPACE
	9	1000			1000			14			16	
	11	1000			1000			18			20	
	13	1000			1000			22			24	
	15	1000			1000			26			28	
SPARE	17							30			32	
	19							34			36	
	21							38			40	
	23							42				
FREEZER	25	1000			1000							
NEW FREEZER	27	1500	20	2	11500		11000					
	29	1500			11500		10000					
	31											
	33											
	35											
	37											
	39											
	41											
TOTAL LOAD/PHASE		WATTS		17000		15500		S.C. INT CAP/BRK.		TO BE DETERMINED		
FEEDER CONDUCTOR SIZE:		AMPS		141		129		CONDUIT SIZE		SEE RISER		
REMARKS:												

**nbwarchitects p.a.**  
ARCHITECTURE / PLANNING / INTERIORS  
SCOTT L. NIELSON, A.I.A. KEVIN R. BODILY, A.I.A. JAMES H. WYATT, A.I.A.  
910 JOHN BARKS PARKWAY, P.O. BOX 2212 - IDAHO FALLS, IDAHO 83402-2212  
(208) 522-8775 (208) 522-8785 (208) 522-8785

REMODEL FOR:  
**SHELLEY SENIOR CENTER**  
193 W. PINE ST.  
SHELLEY, ID 83274

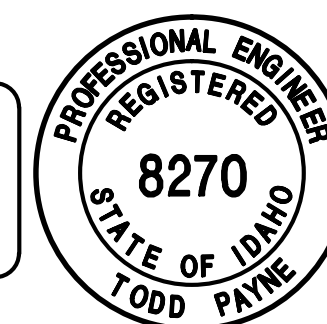
PROJECT:  
SHEET TITLE:  
ELECTRICAL PLAN AND POWER RISER

REVISIONS	
ADDENDUM #1	

PROJECT NO. 18023  
DATE OCTOBER 2018  
DRAWN BY: mmp  
CHECKED BY: tep

DRAWING NO.: AD#1

ORIGINAL SIGNED BY:  
TODD E. PAYNE  
DATED ORIGINAL SIGNED:  
9-25-18  
ON FILE AT:  
PAYNE ENGINEERING INC.



P.E. JOB #1859

REVISED 11/20/18

**IPAYNE**  
Engineering Inc.  
1823 E. Center  
Pocatello, Idaho 83201  
tel (208) 232-4439 fax (208) 232-1435

**E3.0**  
REVISION 1